

SPECIFICATION MODEL CX-140D



IMPEDANCE 50 Ohms.

VOLTAGE

Pull in 10Vdc-14Vdc(12Vdc Nominal)
Drop out 3.0Vdc Min.
Current 69mA @12Vdc 20
Coil resistance 196 Ohms \pm 10% 20

SWITCHING TIME

Pull in 15ms max.
Drop out 10ms max.
LIFE EXPECTANCY 1,000,000. Operation min.

MECHANICAL

Contact arrangement SPDT
RF contacts Break before make.
Operational temperature -25 to +50 (Max Temperature Rise:20)
Weight Approx 95gs.
Mounting Four screws
Cable connections N Female, Directly connect cables

ELECTRICAL CHARACTERISTICS

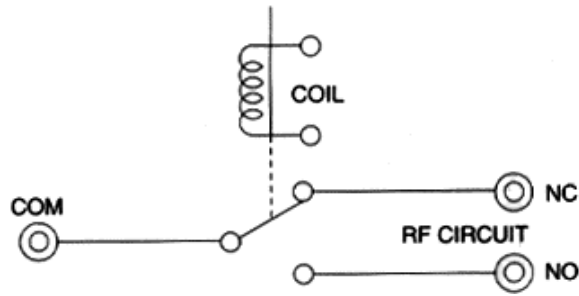
Frequency [MHz]	VSWR [Max]	Isolation [-dB(min)]	Ins.Loss [-dB(max)]	IN PUT RF Power [W]
50	1.03	55	0.08	250
150	1.03	51	0.1	250
500	1.05	47	0.15	200
1000	1.06	34	0.2	150
1500	1.2	28	0.25	100

COIL CHARACTERISTICS

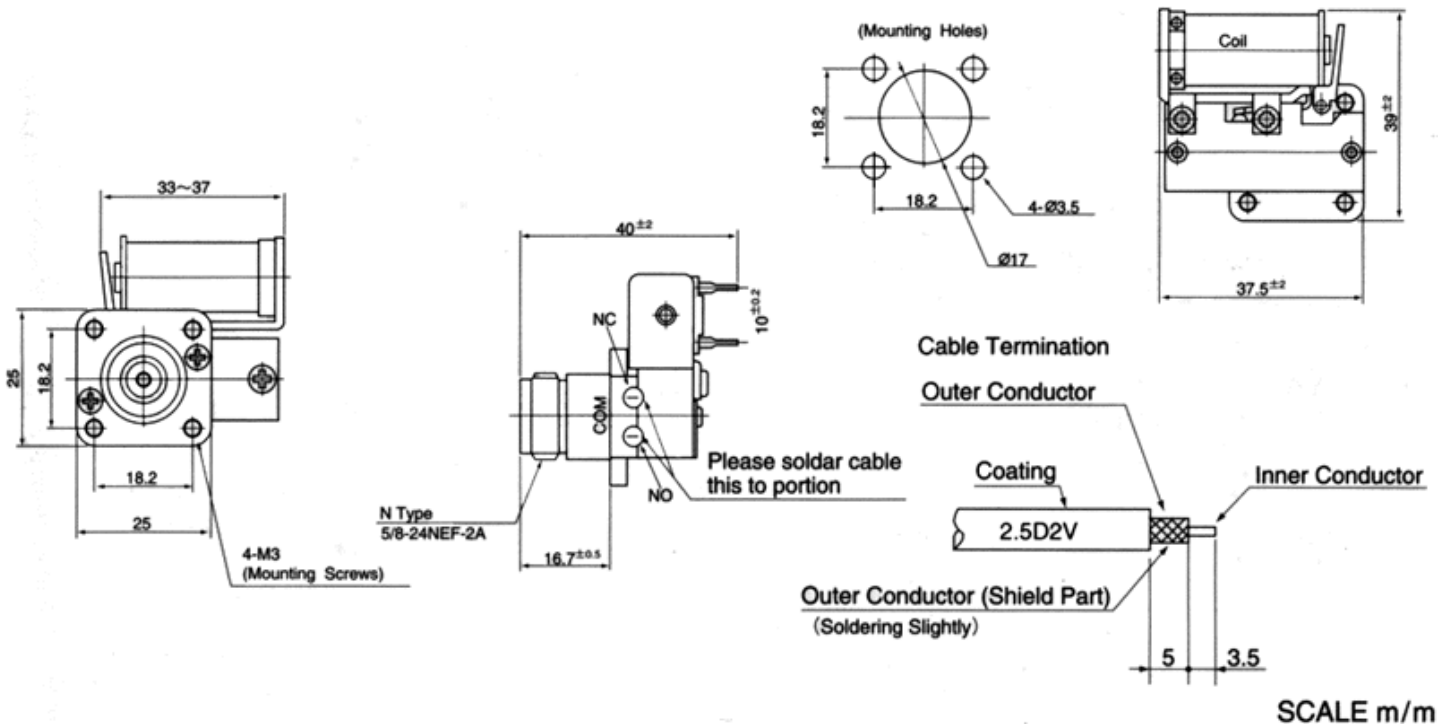
Nominal Voltage Voltage Range Resistance Ohms 10%
12Vdc 10Vdc - 14Vdc 196 \pm 10% 20

Note : Other voltages are also available at option.

Schematic



DIMENSIONS



Specifications are subject to change without notice.

Question & coments? info@tohtsu.com
send mail