

SPECIFICATION MODEL CX-120P



IMPEDANCE 50 Ohms.

VOLTAGE

Pull in 10Vdc-14Vdc(12Vdc Nominal)
Drop out 3.0Vdc Min.
Current 61mA @12Vdc 20
Coil resistance 196 Ohms 10% 20

SWITCHING TIME

Pull in 20ms typical.
Drop out 15ms typical.
LIFE EXPECTANCY 1,000,000. Operation min.

MECHANICAL

Contact arrangement SPDT
Operational temperature -25 to +50 (Max Temperature Rise:20)
Weight Approx 70gs.
Mounting Printed board only

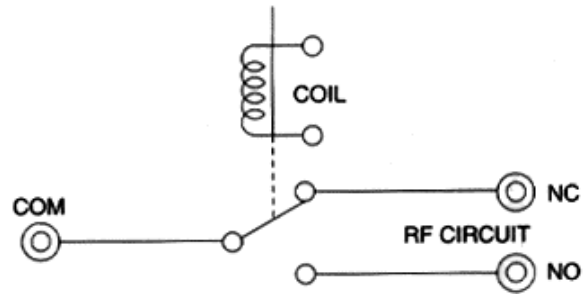
ELECTRICAL CHARACTERISTICS

Frequency [MHz]	VSWR [Max]	Isolation [-dB(min)]	Ins.Loss [-dB(max)]	IN PUT RF Power [W]
50	1.05	60	0.05	250
150	1.1	50	0.1	200
500	1.3	40	0.2	150
1000	1.4	29	0.25	150

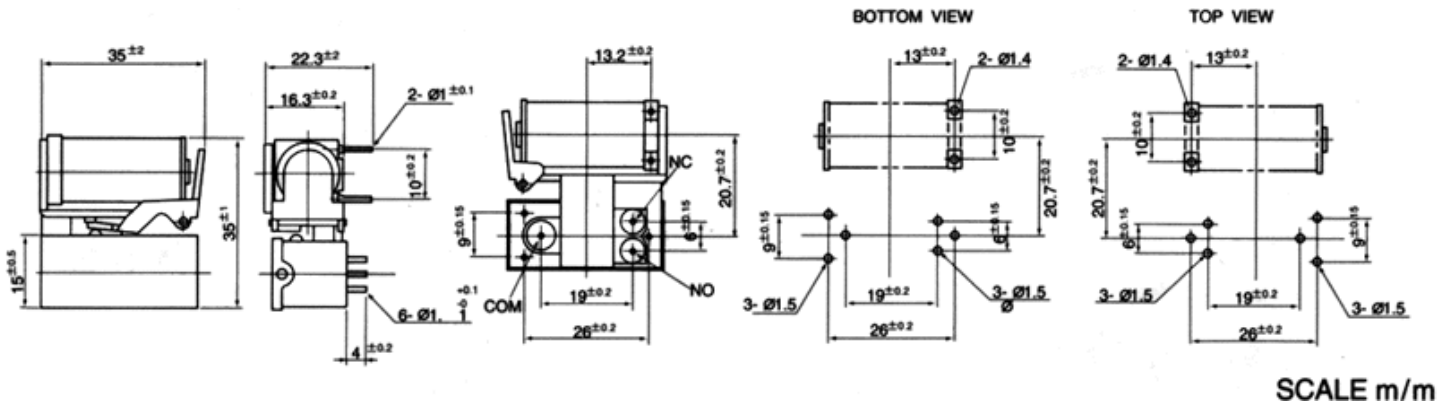
COIL CHARACTERISTICS

Nominal Voltage Voltage Range Coil Resistance Ohms
12Vdc 10Vdc - 14Vdc 196 ± 10% 20
Note : Other voltages are also available at option.

Schematic



DIMENSIONS



Specifications are subject to change without notice.

Question & coments? send mail info@tohtsu.com